

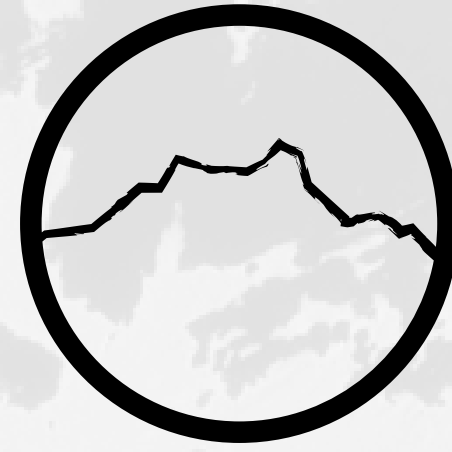


THE MASSIF

2025 - 2026

EXPEDITION RATES





## THE MASSIF

We have designed an expedition calendar that will allow you to explore every corner of the Torres del Paine National Park and its surroundings. We offer half day or full day excursions.

These expeditions have different levels of difficulty and all are led by experienced, friendly and qualified guides, who will accompany you and provide all the technical information on your excursion.





LOW - MEDIUM SEASON

Start Time	End Time	Monday	Tuesday	Wednesday	Thursday	Friday	Saturday	Sunday
FULL DAY								
7:00	20:00	Base Towers		Base Towers		Base Towers		Base Towers
8:30	16:00		Paine Lookouts		Paine Lookouts		Paine Lookouts	
HALF DAY								
8:00	13:30	Cuernos Viewpoint	Aonikenk	Cuernos Viewpoint	Aonikenk	Cuernos Viewpoint	Aonikenk	Cuernos Viewpoint
8:15	13:30	1° Grey III Navigation	1° Grey III Navigation	1° Grey III Navigation	1° Grey III Navigation	1° Grey III Navigation	1° Grey III Navigation	1° Grey III Navigation
10:00	12:00	Nutria horseback ride 1	Nutria horseback ride 1	Nutria horseback ride 1	Nutria horseback ride 1	Nutria horseback ride 1	Nutria horseback ride 1	Nutria horseback ride 1
11:15	16:30	2° Grey III Navigation	2° Grey III Navigation	2° Grey III Navigation	2° Grey III Navigation	2° Grey III Navigation	2° Grey III Navigation	2° Grey III Navigation
14:15	19:30	3° Grey III Navigation	3° Grey III Navigation	3° Grey III Navigation	3° Grey III Navigation	3° Grey III Navigation	3° Grey III Navigation	3° Grey III Navigation
15:00	17:00	Nutria horseback ride 2	Nutria horseback ride 2	Nutria horseback ride 2	Nutria horseback ride 2	Nutria horseback ride 2	Nutria horseback ride 2	Nutria horseback ride 2
15:15	19:00	Condor Viewpoint	Sarmiento Lake	Condor Viewpoint	Sarmiento Lake	Cóndor Viewpoint	Sarmiento Lake	Condor Viewpoint

NOTES

- Calendar enabled from September 1st to October 31st and from April 1st to May 3rd.
- Referenced finishing times.
- Grey III Navigation is operated by Lago Grey Company. During September two departures are available. In May, only one departure is available on Wednesdays and Saturdays, with a different schedule.

CALENDARS

HIGH SEASON

Start Time	End Time	Monday	Tuesday	Wednesday	Thursday	Friday	Saturday	Sunday
FULL DAY								
6:30	20:00	Base Towers		Base Towers		Base Towers		Base Towers
7:15	20:00		French Valley		French Valley		French Valley	
7:15	20:00		Grey Trail		Grey Trail		Grey Trail	
8:00	16:00	Paine Lookouts	Paine Lookouts	Paine Lookouts	Paine Lookouts	Paine Lookouts	Paine Lookouts	Paine Lookouts
HALF DAY								
7:45	13:30	Cuernos Viewpoint	Aonikenk	Ferrier Viewpoint	Cuernos Viewpoint	Aonikenk	Ferrier Viewpoint	Cuernos Viewpoint
8:00	14:00	Río Serrano Navigation	Río Serrano Navigation	Río Serrano Navigation	Río Serrano Navigation	Río Serrano Navigation	Río Serrano Navigation	Río Serrano Navigation
8:15	13:30	1° Grey III Navigation	1° Grey III Navigation	1° Grey III Navigation	1° Grey III Navigation	1° Grey III Navigation	1° Grey III Navigation	1° Grey III Navigation
10:00	12:00	Nutria horseback ride 1	Nutria horseback ride 1	Nutria horseback ride 1	Nutria horseback ride 1	Nutria horseback ride 1	Nutria horseback ride 1	Nutria horseback ride 1
11:15	16:30	2° Grey III Navigation	2° Grey III Navigation	2° Grey III Navigation	2° Grey III Navigation	2° Grey III Navigation	2° Grey III Navigation	2° Grey III Navigation
14:15	19:30	3° Grey III Navigation	3° Grey III Navigation	3° Grey III Navigation	3° Grey III Navigation	3° Grey III Navigation	3° Grey III Navigation	3° Grey III Navigation
15:00	17:00	Nutria horseback ride 2	Nutria horseback ride 2	Nutria horseback ride 2	Nutria horseback ride 2	Nutria horseback ride 2	Nutria horseback ride 2	Nutria horseback ride 2
15:15	19:00	Condor Viewpoint	Toro Lake	Sarmiento Lake	Condor Viewpoint	Toro Lake	Sarmiento Lake	Condor Viewpoint

NOTES

- Calendar enabled from November 1st to December 22nd and from January 4th to March 31st.
- Referenced finishing times.
- Grey III Navigation is operated by Lago Grey Company.
- For French Valley and Grey Trail, the catamaran to and from Pudeto - Paine Grande is operated by Catamarán Lago Pehoé Company.
- Río Serrano Navigation is operated by Solo Glaciares Company.
- **Río Serrano Navigation is not included in the all-inclusive program of río serrano hotel + spa.**

HOLIDAY SEASON

Start Time	End Time	Monday	Tuesday	Wednesday	Thursday	Friday	Saturday	Sunday
FULL DAY								
6:30	20:00	Base Towers	Base Towers	Base Towers	Base Towers	Base Towers	Base Towers	Base Towers
7:00	20:00	French Valley	Grey Trail	French Valley	Grey Trail	French Valley	Grey Trail	French Valley
8:00	16:00	Paine Lookouts	Paine Lookouts	Paine Lookouts	Paine Lookouts	Paine Lookouts	Paine Lookouts	Paine Lookouts
HALF DAY								
7:30	13:30	Cuernos Viewpoint	Aonikenk	Ferrier Viewpoint	Cuernos Viewpoint	Aonikenk	Ferrier Viewpoint	Cuernos Viewpoint
8:00	14:00	Río Serrano Navigation	Río Serrano Navigation	Río Serrano Navigation	Río Serrano Navigation	Río Serrano Navigation	Río Serrano Navigation	Río Serrano Navigation
8:15	13:30	1° Grey III Navigation	1° Grey III Navigation	1° Grey III Navigation	1° Grey III Navigation	1° Grey III Navigation	1° Grey III Navigation	1° Grey III Navigation
10:00	12:00	Nutria horseback ride 1	Nutria horseback ride 1	Nutria horseback ride 1	Nutria horseback ride 1	Nutria horseback ride 1	Nutria horseback ride 1	Nutria horseback ride 1
11:15	16:30	2° Grey III Navigation	2° Grey III Navigation	2° Grey III Navigation	2° Grey III Navigation	2° Grey III Navigation	2° Grey III Navigation	2° Grey III Navigation
14:15	19:30	3° Grey III Navigation	3° Grey III Navigation	3° Grey III Navigation	3° Grey III Navigation	3° Grey III Navigation	3° Grey III Navigation	3° Grey III Navigation
14:30	16:30	Nutria horseback ride 2	Nutria horseback ride 2	Nutria horseback ride 2	Nutria horseback ride 2	Nutria horseback ride 2	Nutria horseback ride 2	Nutria horseback ride 2
15:00	19:00	Condor Viewpoint	Toro Lake	Sarmiento Lake	Condor Viewpoint	Toro Lake	Sarmiento Lake	Condor Viewpoint

NOTES

- Calendar enabled from December 23rd to January 3rd.
- Referenced finishing times.
- Grey III Navigation is operated by Lago Grey Company.
- French Valley and Grey Trail expeditions are not available on December 25th and January 1st.
- For French Valley and Grey Trail, the catamaran to and from Pudeto - Paine Grande is operated by Catamarán Lago Pehoé Company.
- Río Serrano Navigation is operated by Solo Glaciares Company.

EXPEDITIONS

EXPEDITION	SEASONS		
	Low - Medium	High	Holiday
Base Towers	\$128.000	\$160.000	\$200.000
French Valley	-	\$230.000	\$290.000
Grey Trail	-	\$230.000	\$290.000
Paine Lookouts	\$128.000	\$160.000	\$200.000
Aonikenk	\$81.000	\$95.000	\$120.000
Sarmiento Lake	\$81.000	\$95.000	\$120.000
Cuernos Viewpoint	\$81.000	\$95.000	\$120.000
Condor Viewpoint	\$81.000	\$95.000	\$120.000
Toro Lake	-	\$95.000	\$120.000
Ferrier Viewpoint	-	\$95.000	\$120.000
Nutria Horseback ride	\$75.000	\$90.000	\$105.000

NOTES

- Prices per person according to each season, subject to the calendars.
- Prices include VAT.
- The entrance ticket to Torres del Paine National Park is not included.
- Shared services and subject to availability.



RATES

NAVIGATIONS

GREY III

ONE WAY		ROUND TRIP	
Adult	\$100.000	Adult	\$110.000
Child	\$50.000	Child	\$55.000

Services operated by Lago Grey Company.



SERRANO RIVER

ROUND TRIP
\$250.000

Service operated by Solo Glaciares Company.



NOTES

- Price per person.
- Service includes one pisco sour or juice per person.
- Children ages 0 to 4 free of charge.
- Children ages 5 to 12 pay a child price.
- The catamaran sets sail with a minimum of 25 passengers.
- Departure/arrival times may change without prior notice due to weather conditions.
- If round-trip transportation for Grey III Navigation is required, it can be coordinated in advance with your The Massif reservations executive, subject to availability and based on the requested navigation. **Additional cost applies.**

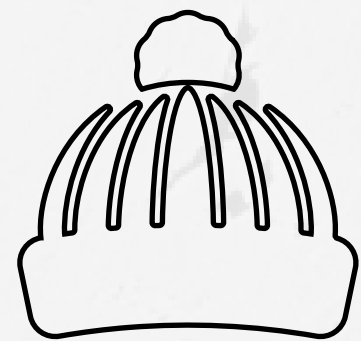
NOTES

- Price per person.
- All navigations are subject to weather conditions.

# WE RECOMMEND

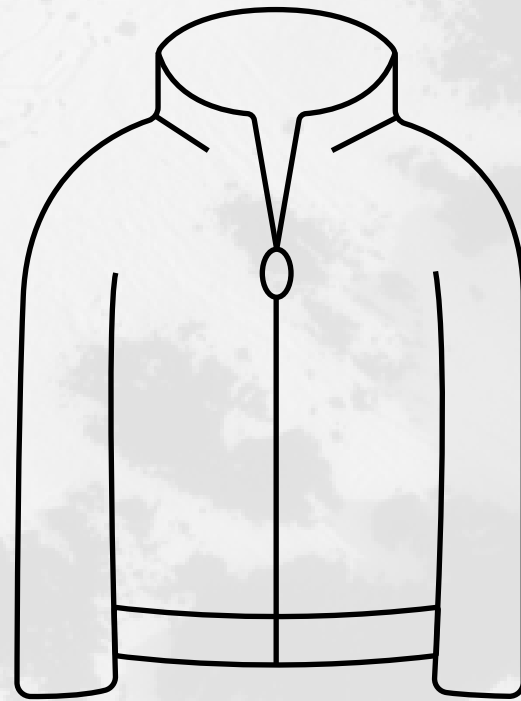
Due to the weather conditions that take place in the area it is indispensable to consider the next equipment for your visit in Torres del Paine National Park.

## Head



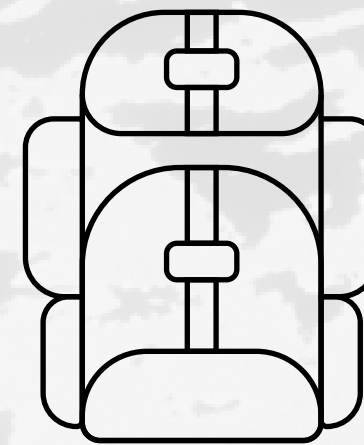
- Fleece hat or similar.
- UV-protection sunglasses.
- Neck gaiter.

## Upper Body



- Quick drying shirt.
- Second layer (fleece or similar).
- Waterproof jacket.
- Gloves.

## Waterproof Backpack



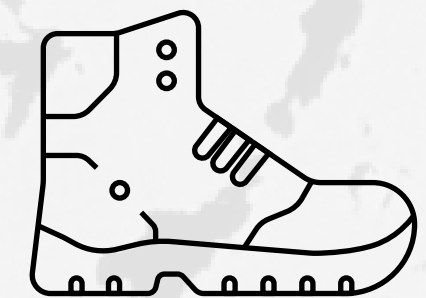
- Sunscreen.
- Water bottle.
- Lip balm.
- Insect repellent.

## Legs



- Quick-dry leggings.
- Waterproof trekking pants.
- Shorts for warmer days.

## Feet



- Long trekking socks
- High-ankle trekking boots



# TERMS AND CONDITIONS

The **reservations of expeditions** are managed directly through your The Massif reservations executive, indicating the services and number of people required at least **14 business days before the check-in of the reservation.**

- The entrance ticket to Torres del Paine National Park is not included.
- Prices are per person, in Chilean pesos (CLP), and include VAT.
- No changes or refunds are allowed after the deadline.
- Shared services, subject to availability and in accordance with the calendar corresponding to your reservation date.
- Expeditions are subject to change and/or cancellation due to weather conditions as indicated by CONAF.
- All expeditions depart according to the seasonal calendar. Guests must be present 15 minutes prior to the indicated start time at The Massif information office. **If you do not show up at the scheduled time, it will be considered as no-show.**
- Expedition start times may change. **It is important to reconfirm your itinerary** after checking in at río serrano hotel + spa.
- French Valley and Grey Trail expeditions are not available on December 25th and January 1st.
- To participate in any expedition, guests must sign a waiver directly at The Massif information office.
- If you booked a full-day activity, the day before you must attend a mandatory briefing at The Massif information office, located in río serrano hotel + spa facilities.
- Grey III Navigation, Serrano River Navigation, and Catamarán Lago Pehoé are operated by external companies.
- Proper equipment is mandatory: high-ankle trekking boots, layered clothing, and waterproof outerwear are required for all expeditions.
- If any deadline falls on a weekend or holiday, payment must be completed on the previous business day.
- In order for minors to participate in activities without a parent or legal guardian, an informed consent form must be signed and submitted prior to the activity date to ensure the child's participation.
  - Children aged 0 to 11 must always be accompanied by an adult.
  - Participants aged 12 to 17 must provide signed informed consent.

# GREY III NAVIGATION CONDITIONS

- It is subject to weather conditions and gets cancelled above 30 knots.
- It sets sail with a minimum of 25 passengers. If the minimum number of passengers is not reached, Lago Grey company cancels the sail.
- The activity is confirmed once you check-in at the Grey navigation desk, located at the Lago Grey Hotel.
- Children can only travel accompanied by an adult:
  - Ages 0 to 4 years and 11 months, free of charge.
  - Ages 5 to 12 years, children rate.
  - Ages 13 and above, adult rate.

## LAGO GREY RECOMMENDATIONS

- This hike is not suitable for individuals with reduced mobility or those who rely on other means for their mobility.
- If attending with infants, we recommend using appropriate backpack carriers, as the terrain is not suitable for strollers.



# PAYMENT AND CANCELLATION POLICIES

**PAYMENT POLICY:** 15 days before check-in\* 100% of the total reserved.

**CANCELLATION POLICY:** 15 days before check-in\* 100% penalty.

**NO-SHOW POLICY:** 100% penalty for no show.

**\*CHECK-IN: DATE OF ARRIVAL TO THE CHECK IN OF YOUR RESERVATION IN RÍO SERRANO HOTEL + SPA.**

The Massif does not assume responsibility for refunds related to climatic problems, road cuts, flight cancellations, or any problem derived from an event outside the company that makes it impossible for you to arrive at the pre-scheduled service. **It is recommended to obtain travel insurance to be supported in such eventualities.**

## **IMPORTANT INFORMATION:**

- Torres del Paine National Park does NOT have fuel stations, money exchange houses and ATMs.
- The payment of the entrance fee to the National Park is managed through an online platform administered by Conaf:  
[www.pasesparques.cl](http://www.pasesparques.cl)
- You should buy the ticket in advance for the total number of days you will be entering Torres del Paine National Park.





**THE MASSIF**

**contact** | [reservas@themassif.com](mailto:reservas@themassif.com)



[www.themassif.com](http://www.themassif.com)



[themassifchile](https://www.instagram.com/themassifchile)

